

SPECIAL PROGRAMME

INDUSTRIAL & ACID CONSTRUCTION



ACID & ALKALINE PROOF | HIGH LOAD CAPACITY | EASY TO CLEAN | SLIP RESISTANT | WHG CERTIFIED*



interbau  **blink**
architekturkeramik made in germany

INDUSTRIAL & ACID CONSTRUCTION



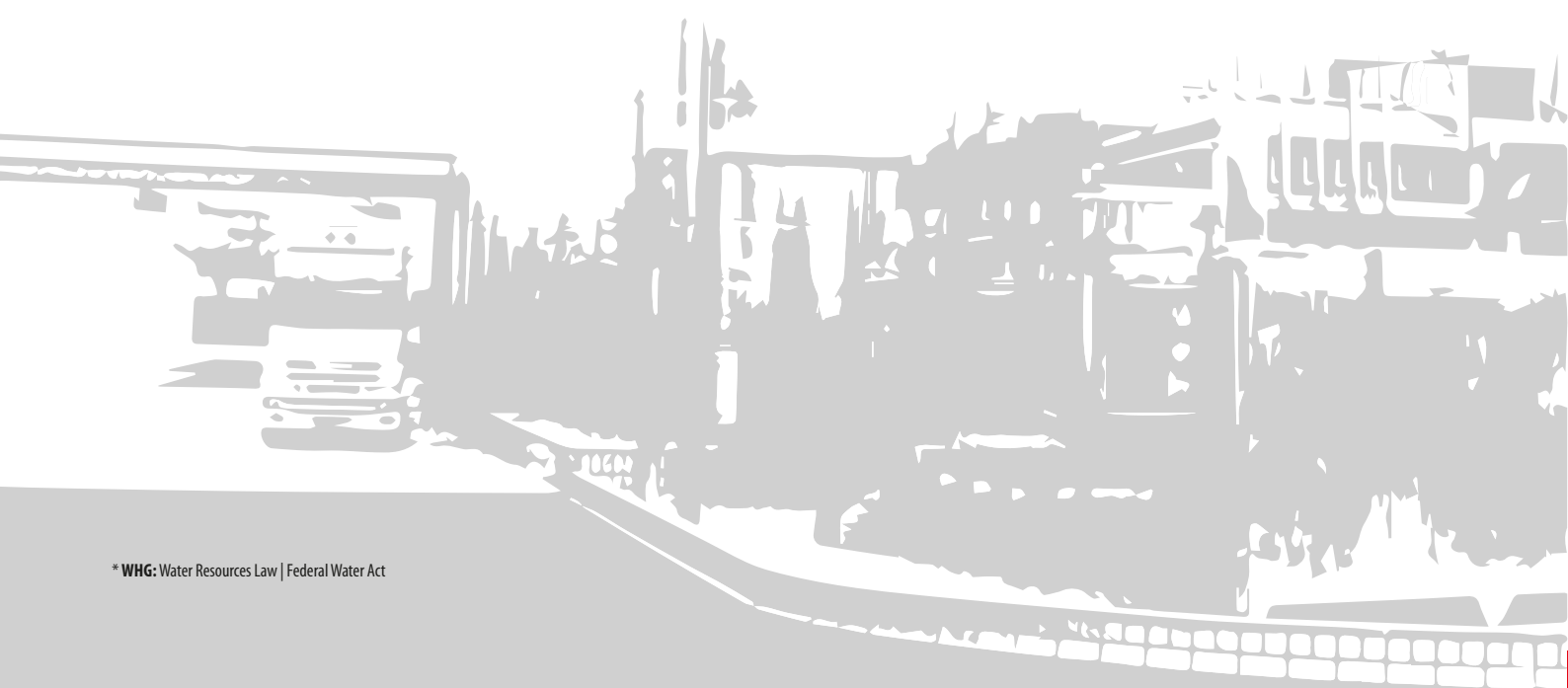
HIGH
PERFORMANCE

SPECIAL CERAMIC MADE BY INTERBAU-BLINK IN USE WORLDWIDE

The automobile test circuits of leading car manufacturers in China, beverage filling plants of well known producers in Spain, dairies in Italy, chemical facilities and laboratories all over the world have one particular thing in common: The high requirements concerning the installed construction materials. Therefore, those and many other industrial clients worldwide trust the products manufactured by **interbau-blink**.

In the sector of acid protection and industrial construction we offer a wide range of shaped ceramics of fine and rough chamotte granularity in highest quality. Optionally, our products can be obtained with a dovetail rear face, which ensures a perfect high mechanical bonding strength.

Material thicknesses of up to 40 mm enable our products to withstand highest loads, even under heavy load conditions. In cold storage rooms, the excellent frost and thermal shock resistance ensures a long product life span. Our ceramic products are constantly subjected to quality controls conducted by our laboratory and exceed the European norm EN 14411 as well as the associated testing standard EN 10545.



SPLIT TILES | UNGLAZED | FINE CHAMOTTE GRANULARITY



Grey yellow | V | R 10
Fine chamotte granularity | Alb



Grey yellow | V | R 11
Fine chamotte granularity | Alb



Grey yellow | V | R 13
Fine chamotte granularity | Alb

Alb Extruded stoneware
EN 14411 Group Alb
Water absorption 0,5 < E ≤ 3,0%

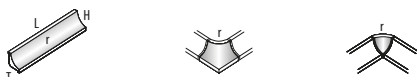


Split tiles



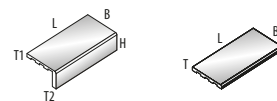
	Split tile 10 mm Dovetail backside	Split tile 14 mm Thin mortar bed	Split tile 18 mm Thin mortar bed	Split tile 25 mm Dovetail backside	Split tile 30 mm Dovetail backside	Split tile 40 mm Dovetail backside
Item no.	1100	1114	1118	1125	1130	1140
Coordinating size in mm	250 x 125 x 10	250 x 125 x 14	250 x 125 x 18	250 x 125 x 25	250 x 125 x 30	250 x 125 x 40
Work size in mm	240 x 115 x 10	240 x 115 x 14	240 x 115 x 18	240 x 115 x 25	240 x 115 x 30	240 x 115 x 40
Unit	m²	m²	m²	m²	m²	m²
Pcs/m ²	33	33	33	33	33	33
Approx. kg/pc	0,60	0,88	1,12	1,55	1,90	2,50
Pcs per box	23	15	12	9	8	6
Pcs per pallet	2484	1620	1296	972	864	648
Approx. kg/pallet	1517	1446	1472	1527	1663	1641
m ² /pallet	75,60	49,10	39,28	29,46	26,19	19,64
Colours SR stress group	Article no. PG	Article no. PG	Article no. PG	Article no. PG	Article no. PG	Article no. PG
Grey yellow R 10 V	41 1100 690 842	41 1114 690 850	41 1118 690 861	41 1125 690 877	41 1130 690 886	41 1140 690 892
Grey yellow R 11 V	41 1100 691 844	41 1114 691 852	41 1118 691 863	41 1125 691 878	41 1130 691 887	41 1140 691 893
Grey yellow R 13 V	41 1100 692 846	41 1114 692 854	41 1118 692 865	upon request	41 1130 692 888	41 1140 692 895

Coved tile systems



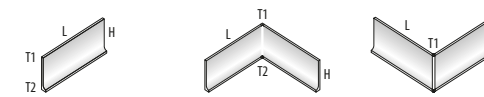
	Coved tile	Internal corner	External corner
Item no.	4100	4107	4102
Dimensions	L x H x T	-	-
Work size in mm	240 x 40 x 40 r = 30	r = 30	r = 30
Unit	pc	pc	pc
Pcs/running meter	4	-	-
Approx. kg/pc	0,36	0,15	0,05
Pcs per box	48	-	-
Pcs per pallet	3456	-	-
Approx. kg/pallet	1245	-	-
m ² /pallet	-	-	-
Colours	Article no. PG	Article no. PG	Article no. PG
Grey yellow	66 4100 690 803	66 4107 690 840	66 4102 690 819

Edge systems



	Edging tile	Long edge rounded
Item no.	4822	1100
Dimensions	L x B x H x T1 T2	L x B x T
Work size in mm	240 x 115 x 52 x 10 15	240 x 115 x 10
Unit	pc	pc
Pcs/running meter	4	4
Approx. kg/pc	0,90	0,6
Pcs per box	10	30
Pcs per pallet	-	-
Approx. kg/pallet	-	-
m ² /pallet	-	-
Colours	Article no. PG	Article no. PG
Grey yellow	44 4822 690 813	41 1100 690-LR 801

Coved skirting systems | regular



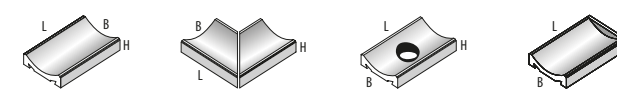
	Coved skirting tile	Internal corner set of two pcs	External corner set of two pcs
Item no.	4000	4002	4007
Dimensions	L x H x T1 T2	L x H x T1 T2	L x H x T1 T2
Work size in mm	240 x 100 x 9 20	240 x 100 x 9 20	240 x 100 x 9 20
Unit	pc	set	set
Pcs/running meter	4	-	-
Approx. kg/pc	0,51	1,06	1,31
Pcs per box	20	10 sets	10 sets
Pcs per pallet	1400	1440	1440
Approx. kg/pallet	735	775	-
m ² /pallet	350	-	-
Colours SR stress group	Article no. PG	Article no. PG	Article no. PG
Grey yellow R 10 V	66 4000 690 803	66 4002 690 830	66 4007 690 830

Coved skirting systems | large



	Coved skirting tile large	Internal corner large	External corner large
Item no.	4001	4600	4700
Dimensions	L x H x T1 T2	-	-
Work size in mm	240 x 111 x 12 35	10 r = 30	55 x 55 x 10 r = 10
Unit	pc	pc	pc
Pcs/running meter	4	-	-
Approx. kg/pc	0,86	0,17	1,31
Pcs per box	11	-	-
Pcs per pallet	770	-	-
Approx. kg/pallet	688	-	-
m ² /pallet	192,5	-	-
Article no. PG	Article no. PG	Article no. PG	Article no. PG
66 4001 690 806	66 4600 690 840	66 4700 690 840	

Special tiles for waste water channels



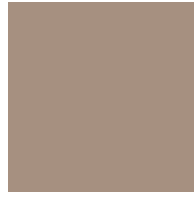
	Gutter tile for open channel systems	Mitred pair set of two pcs	Drainage for 1 1/2" ø = 50 mm i. L.	Stop end
Item no.	4500	4502	4501	4504
Dimensions	L x B x H	L x B x H	L x B x H	L x B x H
Work size in mm	240 x 150 x 35	(2 x) 238 x 150 x 35	240 x 150 x 35	240 x 150 x 35
Unit	pc	set	pc	pc
Pcs/running meter	4	-	-	4
Approx. kg/pc	1,53	kg/set 1,3	1,4	1,7
Pcs per box	8	1 set	8	8
Colours Slip resistance	Article no. PG	Article no. PG	Article no. PG	Article no. PG
Grey yellow R 10	66 4500 690 826	66 4502 690 882	66 4501 690 882	66 4504 690 882
Grey yellow R 11	66 4500 691 837	66 4502 691 882	66 4501 691 882	66 4504 691 882

ACID
RESISTANT

SPLIT TILES | UNGLAZED | COARSE CHAMOTTE GRANULARITY



Grey cream | V | R 11
Coarse chamotte granularity | Alb



Light grey | V | R 11
Coarse chamotte granularity | Alb



Dark grey | V | R 11
Coarse chamotte granularity | Alb

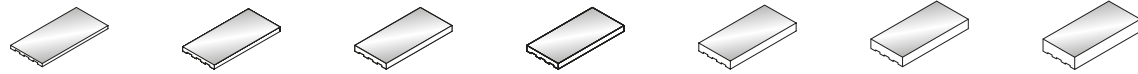


Red uni | V | R 11
Coarse chamotte granularity | Alb

Alb Extruded stoneware
EN 14411 Group Alb
Water absorption 0,5 < E ≤ 3,0%



Split tiles

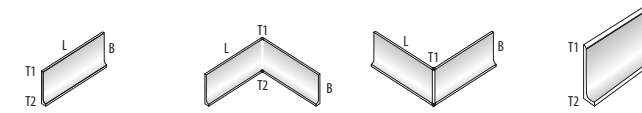


	Split tile 10 mm	Split tile 13 mm	Split tile 15 mm	Split tile 18 mm	Split tile 25 mm	Split tile 30 mm	Split tile 40 mm
	Dovetail backside	Dovetail backside	Dovetail backside	Dovetail backside	Dovetail backside	Dovetail backside	Dovetail backside
Item no.	1100	1113	1115	1118	1125	1130	1140
Coordinating size in mm	250 x 125 x 10	250 x 125 x 13	250 x 125 x 15	250 x 125 x 18	250 x 125 x 25	250 x 125 x 30	250 x 125 x 40
Work size in mm	240 x 115 x 10	240 x 115 x 13	240 x 115 x 15	240 x 115 x 18	240 x 115 x 25	240 x 115 x 30	240 x 115 x 40

Unit	m ²	m ²	m ²	m ²	m ²	m ²	m ²
Pcs/m ²	33	33	33	33	33	33	33
Approx. kg/pc	0,60	0,76	0,90	1,06	1,55	1,90	2,50
Pcs per box	21 23	16	14	12	9 10	8	6
Pcs per pallet	2205 2415	1680	1470	1260	945 960	840	630
Approx. kg/pallet	1349 1480	1297	1344	1356	1495 1508	1625	1605
m ² /pallet	67,12 73,50	50,91	44,54	38,19	28,64 29,10	25,45	19,09

Colours SR stress group	Article no. PG	Article no. PG	Article no. PG	Article no. PG	Article no. PG	Article no. PG	Article no. PG
Grey cream R 11 V	11 1100 693 844	11 1113 693 850	11 1115 693 858	11 1118 693 863	11 1125 693 878	11 1130 693 887	11 1140 693 893
Light grey R 11 V	11 1100 694 855	11 1113 694 867	11 1115 694 872	11 1118 694 876	upon request	upon request	upon request
Dark grey R 11 V	11 1100 695 855	11 1113 695 867	11 1115 695 872	11 1118 695 876	upon request	upon request	upon request
Red uni R 11 V	11 1100 153 842	11 1113 153 850	11 1115 153 855	11 1118 153 861	11 1125 153 877	11 1130 153 886	upon request

Coved skirting systems



	Coved skirting tile	Internal corner	External corner	Coved skirting tile large
Item no.	4000	4004	4003	4016
Dimensions	L x B x T1 T2	L x B x T1 T2	L x B x T1 T2	L x H x T1 T2
Work size in mm	240 x 90 x 11,5 22	240 x 90 x 11,5 22	240 x 90 x 11,5 20	240 x 170 x 12 24

Unit	pc	set	set	pc
Pcs/running meter	4	-	-	4
Approx. kg/pc	0,58	1,06	1,31	1,05
Pcs per box	22	10 sets	10 sets	20
Pcs per pallet	1848	-	-	1200
Approx. kg/pallet	1092	-	-	1280
m ² /pallet	-	-	-	-

Colours SR stress group	Article no. PG	Article no. PG	Article no. PG	Article no. PG
Grey cream R 11 V	14 4000 693 805	14 4004 693 835	14 4003 693 835	14 4016 693 823
Light grey R 11 V	14 4000 694 808	14 4004 694 838	14 4003 694 838	-
Dark grey R 11 V	14 4000 695 808	14 4004 695 838	14 4003 695 838	-
Red uni R 11 V	14 4000 153 803	14 4004 153 830	14 4003 153 830	-

Coved tile systems

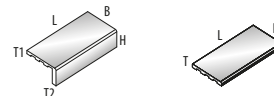


	Coved tile
Item no.	4100
Dimensions	L x H x T
Work size in mm	40 x 40 x 40 r = 30

Unit	pc
Pcs/running meter	4
Approx. kg/pc	0,34
Pcs per box	25
Pcs per pallet	3456
Approx. kg/pallet	1200
m ² /pallet	-

Colours	Article no. PG
Grey cream R 11 V	14 4100 693 805
Light grey R 11 V	14 4100 694 808
Dark grey R 11 V	14 4100 695 808
Red uni R 11 V	14 4100 153 803

Edge systems



	Edging tile	Long edge rounded
Item no.	4822	1100-LR
Dimensions	L x B x H x T1 T2	L x B x T
Work size in mm	240 x 115 x 52 x 10 15	240 x 115 x 10

Unit	pc	pc
Pcs/running meter	4	4
Approx. kg/pc	0,90	0,58
Pcs per box	8	22
Pcs per pallet	784	-
Approx. kg/pallet	731	-
m ² /pallet	-	-

Colours	Article no. PG	Article no. PG
Grey cream R 11 V	-	11 1100 693-LR 803
Light grey R 11 V	-	11 1100 694-LR 805
Dark grey R 11 V	-	11 1100 695-LR 805
Red uni R 11 V	14 4822 153 813	11 1100 153-LR 803



EXTRUDED
STONeware



PG = Price group | SR = Slip resistance

TECHNICAL INFORMATION

Slip resistance and safety | Working areas and floors in work rooms with slip risk entered with footwear

No.	Work rooms and areas	R-group	V-group
0 General work rooms and areas			
0.1	Entrance areas	R 9	
0.2	Stairs	R 9	V 4
0.3	Social facilities (e.g. toilets, washrooms)	R 10	
1 Manufacture of margarine, edible fats and oils			
1.1	Melting of fat	R 13	V 6
1.2	Cooking oil refinery	R 13	V 4
1.3	Margarine production and packaging	R 12	
1.4	Cooking fat production + packaging, oil bottling	R 12	
2 Milk processing cheese production			
2.1	Fresh milk processing and butter production	R 12	
2.2	Cheese production, storage and packaging	R 11	
2.3	Ice-cream manufacturing	R 12	
3 Chocolate and confectionary production			
3.1	Sugar processing	R 12	
3.2	Cocoa production	R 12	
3.3	Production of raw mixtures	R 11	
3.4	Fabrication of chocolate bars and shells and filled chocolates	R 11	
4 Production of bread, cakes and pastries (bakeries, cake shops, production of long-life bakery products)			
4.1	Dough preparation	R 11	
4.2	Rooms in which in which predominantly fats or liquid mixtures are processed	R 12	
4.3	Washing-up rooms	R 12	V 4
5 Slaughtering, meat processing			
5.1	Slaughter-house	R 13	V 10
5.2	Tripe processing room	R 13	V 10
5.3	Meat sectioning	R 13	V 8
5.4	Sausage kitchen	R 13	V 8
5.5	Boiled sausage unit	R 13	V 8
5.6	Raw sausage unit	R 13	V 6
5.7	Sausage drying room	R 12	
5.8	Smoking establishments	R 12	
5.9	Salting and curing rooms	R 12	
5.10	Poultry processing	R 12	V 6
5.11	Gut store	R 12	
5.12	Cold cuts and packaging unit	R 12	V 8
6 Fish processing, production of delicatessen			
6.1	Fish processing	R 13	V 10
6.2	Production of delicatessen	R 13	V 6
6.3	Manufacture of mayonnaise	R 13	V 4
7 Processing of vegetables			
7.1	Production of sauerkraut	R 13	V 6
7.2	Vegetable tinning	R 13	V 6
7.3	Sterilizing room	R 11	
7.4	Rooms in which vegetables are prepared for processing	R 12	V 4
8 Wet areas in food and beverage production <small>(if not particularly mentioned)</small>			
8.1	Storage cellars	R 10	
8.2	Beverage bottling, fruit juice production	R 11	
9 Catering establishments			
9.1	Kitchens in the catering trade (restaurant kitchens, hotel kitchens)		
9.1.1	up to 100 meals per day	R 11	V 4
9.1.2	more than 100 meals per day	R 12	V 4
9.2	Kitchens catering for homes, schools, kindergartens, sanatoria	R 11	
9.3	Kitchens catering for hospitals, clinics	R 12	
9.4	Large kitchens catering for industrial and university canteens and contract catering	R 12	V 4
9.5	Food preparation kitchens (Fast food kitchens, snack bars)	R 12	V 4
9.6	Kitchens for heating up frozen meals	R 10	
9.7	Coffee and tea kitchens, hotel garni kitchens and ward kitchens	R 10	
9.8	Washing-up rooms		
9.8.1	Washing-up rooms for 9.1, 9.4, 9.5	R 12	V 4
9.8.2	Washing-up rooms for 9.2	R 11	
9.8.3	Washing-up rooms for 9.3	R 12	
9.9	Dining rooms, guest rooms, canteens including serving counters	R 9	
10 Cold stores, deep freeze stores			
10.1	for unpacked goods	R 12	
10.2	for packed goods	R 11	
11 Sales outlets, shops			
11.1	Reception of goods, meat	R 11	
11.2	Reception of goods, fish	R 11	
11.3	Serving counters for meat and sausage		
11.3.1	Unpacked	R 11	
11.3.2	Packed	R 10	
11.4	Serving counters for fish	R 12	
11.5	Meat preparing rooms	R 12	V 8
11.6	Floristic shops	R 11	
11.7	Sales areas with stationary ovens	R 11	
11.8	Sales areas with stationary chip pans or grills	R 12	V 4
11.9	Shops, customer rooms	R 9	
11.10	Preparation areas for food for self-service shops	R 10	
11.11	Cash register areas, packing areas	R 9	
11.12	Serving counters for bread, cakes and pastries, unpacked goods	R 10	
11.13	Serving counters for cheese, and cheese products, unpacked goods	R 10	
11.14	Serving counters except 11.3 to 11.5 and 11.13, 11.14	R 9	
12 Health service rooms			
12.1	Disinfection rooms (wet)	R 11	
12.2	Pre-cleaning areas of sterilization	R 10	
12.3	Faeces disposal rooms, discharge rooms, unclean nursing workrooms	R 10	
12.4	Pathological facilities	R 10	
12.5	Rooms for medical baths, hydrotherapy, fango preparation	R 11	
12.6	Washrooms for operating theatres, plastering rooms	R 10	
12.7	Sanitary rooms, ward bathrooms	R 10	
12.8	Rooms for medical diagnosis and therapy, massage rooms	R 9	
12.9	Operating theatres	R 9	
12.10	Wards with hospital rooms and corridors	R 9	
12.11	Medical practices, day clinics	R 9	
12.12	Pharmacies	R 9	
12.13	Laboratories	R 9	
12.14	Hairdressing rooms	R 9	
13 Laundry			
13.1	Rooms with washing machines for washing of linen and clothes with water	R 9	
13.2	Ironing rooms	R 11	
14 Fodder concentrate production			
14.1	Dried fodder production	R 11	
14.2	Fodder concentrate production using fat and water	R 11	V 4
15 Leather production, textiles			
15.1	Wet areas in tanneries	R 13	
15.2	Rooms with fleshing machines	R 13	V 10
15.3	Areas, where leather scraps accumulate	R 13	V 10
15.4	Rooms for making leather impermeable by means of grease	R 12	
15.5	Dye mills for textiles	R 11	
16 Paint shops			
16.1	Wet grinding areas	R 12	V 10
17 Ceramic industry			
17.1	Wet grinding mills (processing of ceramic raw materials)	R 11	
17.2	Mixers, handling of materials like tar, pitch, graphite, and sythetic resins	R 11	V 6
17.3	Presses (shaping), handling of materials like tar, pitch, graphite, and sythetic resins	R 11	V 6
17.4	Moulding areas	R 12	
17.5	Glazing areas	R 12	
18 Glass and stone processing			
18.1	Stone cutting, stone grinding	R 11	
18.2	Glass shaping	R 11	
18.2.1	Hollow glass ware, container ware, glass for building purposes	R 11	V 4
18.3	Grinding areas		
18.3.1	Hollow glass ware, flat glass	R 11	
18.4	Insulating glass manufacture, handling of drying agents	R 11	V 6
18.5	Packaging, shipping of flat glass, handling of anti-adhesive agents	R 11	
18.6	Etching and acid polishing facilities for glass	R 13	
19 Cast concrete factories			
19.1	Concrete washing areas	R 11	
20 Storage areas			
20.1	Storage areas for oils and fats	R 12	V 6
21 Chemical and thermal treatment of iron and metal			
21.1	Pickling plants	R 12	
21.2	Hardening shops	R 12	
21.3	Laboratory rooms	R 11	
22 Metal processing, metal workshops			
22.1	Galvanizing shops	R 12	
22.2	Grey cast iron processing	R 11	V 4
22.3	Mechanical iron processing areas (turnery, milling shops etc.) punching room, pressroom, drawing shop (pipes, wires) and areas exposed to increased stress by oil and lubricants	R 11	V 4
22.4	Parts cleaning areas, exhaust stream areas	R 12	
23 Vehicle repair workshops			
23.1	Repair and servicing bays	R 11	
23.2	Working and inspection pits (wet)	R 12	V 4
23.3	Car washing halls	R 11	V 4
24 Aircraft repair shops			
24.1	Aircraft hangars	R 11	
24.2	Repair hangars	R 12	
24.3	Washing halls	R 11	V 4
25 Sewage treatment plants			
25.1	Pump rooms	R 12	
25.2	Rooms for sludge draining facilities	R 12	
25.3	Rooms for screening equipment	R 12	
26 Fire brigade buildings			
26.1	Vehicle parking places	R 12	
26.2	Rooms for hose maintenance equipment	R 12	
27 Financial institutions			
27.1	Counter areas	R 9	
28 Garages with the exception of the areas specified under number 0			
28.1	Garages, car parks	R 10	
29 Schools and kindergartens			
29.1	Entrance areas, corridors, assembly halls	R 9	
29.2	Class rooms, group rooms	R 9	
29.3	Stairs	R 9	
29.4	Toilets, washrooms	R 10	
29.5	Instructional kitchens in schools, (also see no. 9)	R 10	
29.6	Kitchens in kindergartens, (also see no. 9)	R 10	
29.7	Machine rooms for wood processing	R 10	
29.8	Special rooms for handicrafts	R 10	



Valid standards and test results

General standards and tests EN 14411 group	Standard A1a extruded stoneware	Test Value
E = water absorption	0,5 < E ≤ 3%	
Dimensions and surface properties		
Length and width: Permissible deviation from work size	± 1,0 %	fulfilled
Thickness: Permissible deviation from work size	± 10 %	fulfilled
Straightness of sides: Permissible deviation referring to the length of the sides	± 0,5 %	fulfilled
Rectangularity: Permissible deviation referring to the length of the sides	± 1,0 %	fulfilled
Surface flatness: Permissible deviation		
a) as centre camber of the diagonal, calculated from the work size	± 0,5 %	fulfilled
b) as side camber referring to the corresponding work size	± 0,5 %	fulfilled
c) as inclined plane referring to the diagonal, calculated from the work size	± 0,8 %	fulfilled
Surface quality: Accepted tiles	at least 95 %	fulfilled
Physical Properties		
Water absorption (average value in %)	0,5 < E ≤ 3%	< 1,5 %
Breaking load in N/mm ² depending on the thickness of the material		8 mm > 1.280 N 9 mm > 1.620 N 10 mm > 2.000 N
Frost resistance	required	fulfilled
Resistance to surface abrasion of glazed tiles	class I - IV	according to specifications
Resistance to abrasion of unglazed tiles/loss in volume in mm ³	max. 275	< 210
Thermal shock resistance	required	fulfilled
Thermal coefficient of expansion at ambient temperature of up to 100°C in K ⁻¹		5 - 13 x 10 ⁻⁶
Chemical Properties		
Resistance to chemicals – except to hydrofluoric acid and its compounds for unglazed tiles	required	fulfilled
for glazed tiles		
a) to acids and alkali	acc. to specifications	fulfilled
b) to stains	min. class III	fulfilled
c) to household chemicals	min. class GB	fulfilled
d) to swimming pool additives	min. class GB	fulfilled
Resistance to glaze cracking	required	fulfilled
Slip resistance		
Industrial areas	R 9 - R 12	acc. to specifications
Wet barefoot areas	A - C	acc. to specifications
Private areas	recommendation: R 9	acc. to specifications

The indicated property values are average values. All specifications correspond to the current state of our knowledge, however do not represent the promise of the properties. Subject to technical modifications.

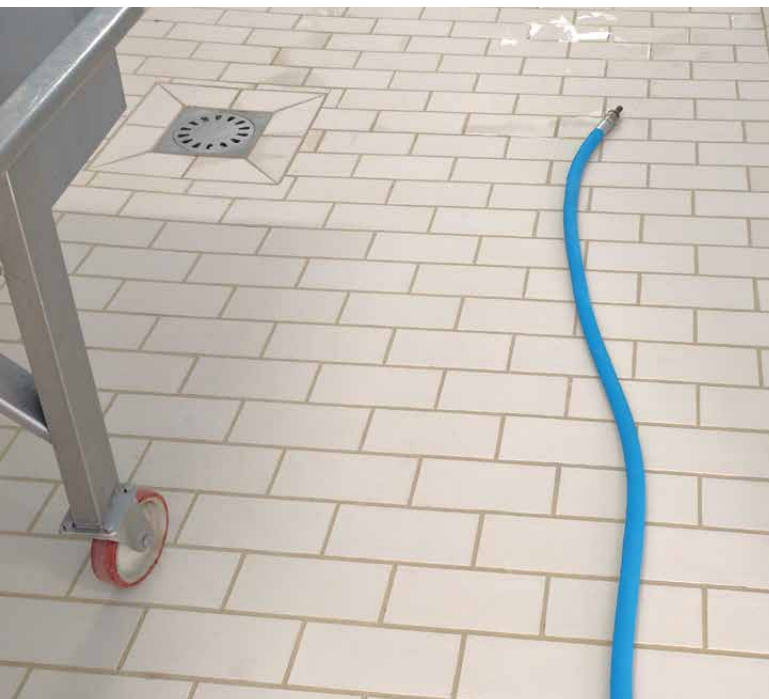
Table of the respective stress groups according to the PEI wet method DIN EN ISO 10545-7

Stress group	Rotations	Valuation
I	150	very light traffic load e.g. bathrooms walked on in soft footwear
II	300 - 600	light traffic load e.g. living areas & bathrooms walked on in normal footwear, exposed to some abrasive dirt
III	750 - 1500	medium traffic load e.g. living areas, loggias, corridors, terraces, balconies
IV	> 1500	higher traffic load e.g. entrance areas, offices, sales rooms, industrial and commercial areas
V	> 12000	very high traffic load e.g. restaurants, shops, counter areas



SPLIT
TILES

CLEANING & MAINTENANCE



Heavily frequented areas:

The cleaning is required according to the degree of dirt. In case of heavily frequented areas, cleaning should take place several times a day. In general, it is sufficient to use commercially available cleaners for the regular cleaning. Please consider that cleaners with combined long term preparation possibly may cause layers of fat, wax or synthetic layers, which may have negative influence on the slip resistance and might harm the visual properties of the tile

Difficult stains:

The easiest way to remove difficult stains, calcareous deposits, urine stone and metal abrasion residues is the application of acid cleaners. Consider to remove the acid cleaner completely by rinsing with clear water or neutralizing after sufficient time for the cleaner to act upon the dirt. Paint drops, tar or similar residues can easily be removed with gasoline, acetone or caustic pastes. This also applies for epoxy resin. Grease, wax and oil can be loosened by highly alkaline cleaners and are easy to remove afterwards.

Unglazed ceramics:

Unglazed ceramics without impregnation may show stains caused by this contamination, which can not be completely removed again. Unglazed ceramic tiles without in-plant upgrading should be impregnated as prevention in cases where practical experience shows that the floor may come into contact with grease or oil.

Special ceramics:

In our production programme you will find a wide range of slip resistant glazed and unglazed tiles. These products are specially developed for application in public, commercial, industrial areas as well as wet barefoot areas like swimming pools, showers, saunas etc. Depending on the area of application they have rough or profiled surfaces. The most effective method of cleaning is granted with brushing machines, high-pressure or vapour pressure cleaners. Do not use brushes or pads containing abrasives as they will have a negative impact on the slip resistance of the tile. Take care that the tile surface is thoroughly rinsed from cleaning liquids and disinfection liquids with clear water in order to prevent the floor covering to become slippery. For first and general cleaning we propose alkali based cleaning liquids. An acid cleaning should just be made from time to time depending on the degree of dirt and mainly depends on the type of water used. The German organization "Deutsche Gesellschaft für das Badewesen" has established a list with tested cleaning liquids for ceramic surfaces in swimming pools. These cleaners will also be proposed on our behalf for cleaning of our tiles. Impregnation of glazed or unglazed ceramic surfaces may alter the performance characteristics (visual properties, slip resistance) of the ceramic.

Minimal iron lumps:

Due to the nature of ceramics minimal iron lumps may occur, which in single cases appear as small black spots. They do not influence the visual effect or quality.

Cleaning instructions for ceramic tiles

Compared to other covering materials, ceramic tiles grant excellent properties in maintenance. Long durability, easy cleaning combined with best hygiene characteristics and high functionality in private and public areas are the best reasons for this strong and decorative material. **interbau-blink** glazed and unglazed tiles are ideal for cleaning without problems. Please consider never to use cleaning agents containing hydrofluoric acid or its compounds (fluorides). They attack every ceramics even if diluted with plenty of water. Of course it makes sense to keep foot-scrappers, floor mats, cleaning zones and entrance areas clean too, in order to prevent the dirt getting inside in first case.

For cleaning the following principles apply:

1. Choice of the appropriate cleaning agent
2. Allow the cleaning agent sufficient time to act upon the dirt and to loosen it
3. The process must be supported mechanically by brushing or wiping. Do not use pads or brushes with abrasive grain addition!
4. Collect the separated dirt thoroughly by washing and absorbing.

The first cleaning that takes place immediately after finishing the laying works, should be done as follows:

First the coarse dirt is removed by sweeping. Afterwards thorough cleaning follows by applying the appropriate cleaner. Cement residues can be removed with acid cleaning agents, so-called cement film removers. Please consider that acid cleaners attack cement joints. This can be prevented by protecting the joint through prewetting and thorough cleaning of the covering with clear water afterwards. Depending on the concentration, neutralization shall take place. Normal dirt can be removed best with alkaline or neutral cleaners.

ACID & ALKALINE PROOF | HIGH LOAD CAPACITY
EASY TO CLEAN | SLIP RESISTANT | WHG CERTIFIED

EASY TO CLEAN

All information contained in this catalogue can only be considered as guide-lines without engagement. This information does not commit us on a contractual basis. We reserve the right to adjust information without prior notification.

Colours are non-binding. The editor disclaims liability for printing errors or colour variation. Adjustments in regards to technical properties are subject to changes at any time.



ACID & ALKALINE PROOF | HIGH LOAD CAPACITY | EASY TO CLEAN | SLIP RESISTANT | WHG CERTIFIED*



interbau  **blink**
architekturkeramik made in germany

Alois Korzilius Interbau | Fabrikation für moderne Baukeramik GmbH & Co. KG
Hauptstr. 73-79 · 56235 Ransbach-Baumbach · Germany · Tel. +49 2623 896-0
Fax +49 2623 896-66 · info@interbau-blink.de · www.interbau-blink.de